



PRO-CAST

Solid Foundations,
Strong Futures.

PRECAST CONCRETE SOLUTIONS

CONCRETE SHEETPILES



INTRODUCTION

Welcome to Pro-Cast, your trusted partner in delivering top-notch precast concrete solutions tailored to meet your specific needs. As a leading provider in the industry, Pro-Cast prides itself on its commitment to excellence, innovation, and customer satisfaction. With a focus on quality, reliability, and versatility, we stand ready to exceed your expectations and contribute to the success of your projects.

Precast concrete sheet pile walls offer faster and more economical retaining solutions compared to conventional methods like RC, diaphragm, contiguous bored pile, secant pile, and steel sheet pile walls. With distinct technical advantages, they're popular for both temporary and permanent structures.

ADVANTAGES OF PRECAST CONCRETE SHEETPILES

- Long Serviceable Life
- Less Corrosion Worries
- Maintenance Free
- Flexible Sizes & Lengths
- High Performance
- Aesthetic Appearance

APPLICATION

Temporary Structure :

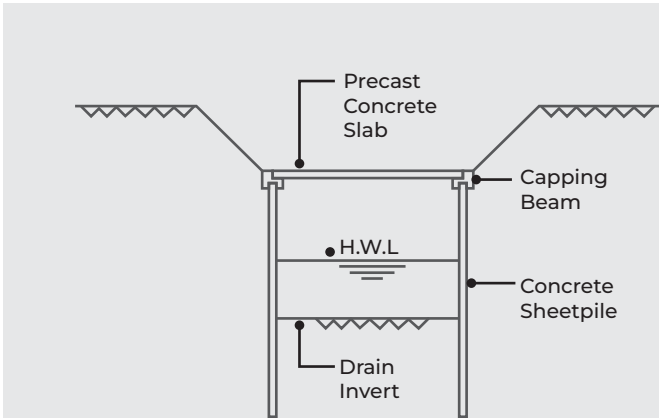
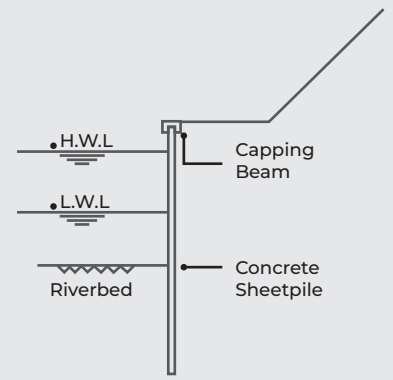
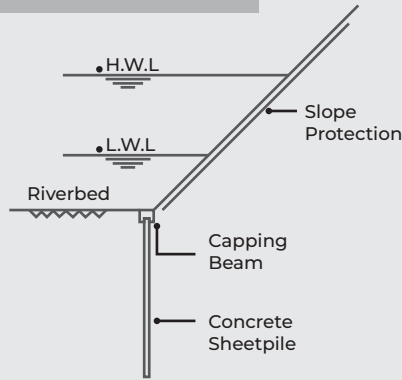
Utilized for shoring during construction and basement excavation.

Permanent Structure :

Used for various applications including river embankments, wharf/quay walls, sea walls, revetments, foot/scour protection, cut-off walls, bund construction, road/railway embankments, sewerage/drainage trenches, storage ponds, and more.



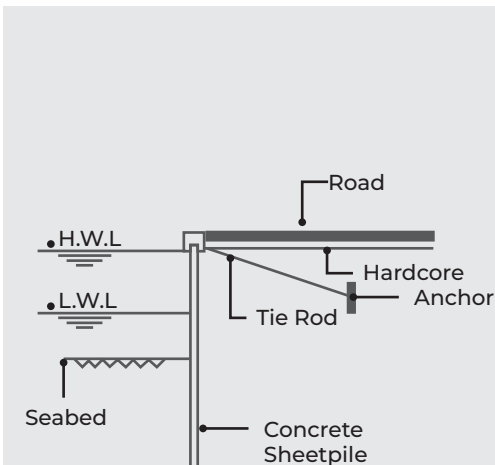
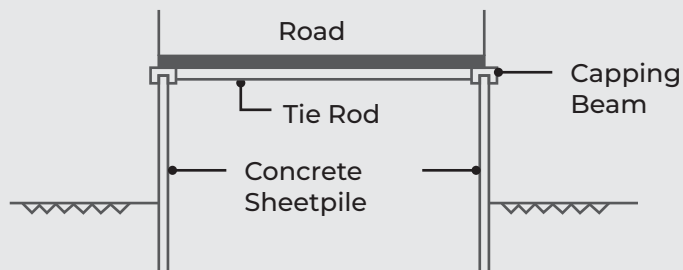
RIVER EMBANKMENT



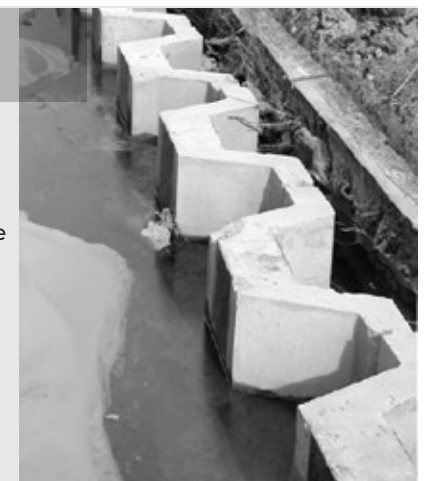
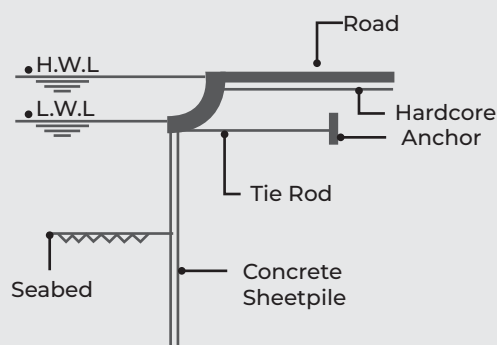
DRAIN / CULVERT



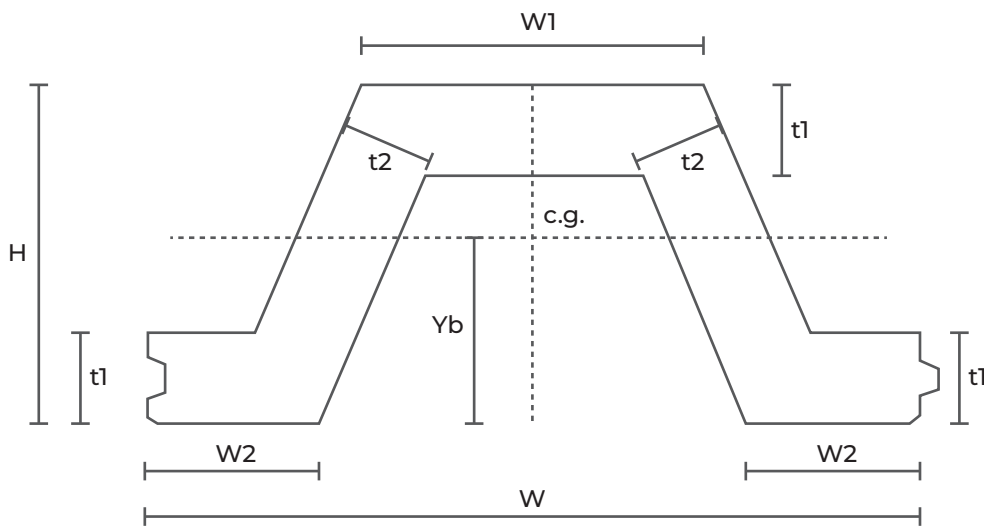
ROAD / RAILWAY EMBANKMENT



PORT STRUCTURE



CORRUGATED SHAPE PROFILE : TYPES & PROPERTIES



Type & Sizes :

H (mm)	W (mm)	W1 (mm)	W2 (mm)	t1 (mm)	t2 (mm)	Length (mm)
450	1000/1200	485	220	120	120	6m, 7.5m, 9m, 12m
500	1200	500	250	150	135	6m, 7.5m, 9m, 12m, 15m
600	1200	600	265	165	135	9m, 12m, 15m

Design Specification

Structure Design Code	BS8110 : Part1 : 1997
Cement Design Code	MS522
Steel Design Code	MS146
Aggregate Design Code	MS29
Admixture Design Code	MS922

PRO-CAST

Professional Precast Sdn Bhd

☎ +6 016-330 8365

☎ 03-2276 5255

🌐 www.pro-cast.co

✉ Ivanseah@pro-cast.co

📍 12-3A, Level 12, Menara MBMR.
No 1, Jalan Syed Putra, 58000 Kuala Lumpur.